

MATERIALS:

- ... Weaving thread or fishing nylon thread
- 1 Mesh dome
- ... Jump rings
- ... Bicone or drop shaped
- ... Round beads (2 to 3 mm)
- 1 Scissors
- 2 Flat nose pliers (or 1 flat nose pliers and 1 jump ring finger ring)
- 1 Flexible needle



Preparation:



1- Choose the color and size of your beads. You will need bicone or drop beads as well as smaller round beads.



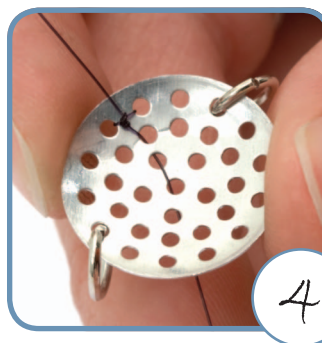
2- Choose the type of thread with which you want to create your mesh dome stitching. There are other types of support you can use to stitch rings. For this project, it is strongly recommended to work with a flexible needle.

Measure and cut off 1 to 1,5 m of thread depending on the size of the dome you chose.

Stringing:



3- If you plan to integrate the dome to a necklace or bracelet, just add jump rings where indicated on the illustration before stitching your dome.



4- Turn the mesh dome face down. Tie one end of the thread on the edge of the dome making sure to leave at least 5 cm of thread that will be used when making the final knot. Make a double flat knot and string the thread up to the center of the dome.

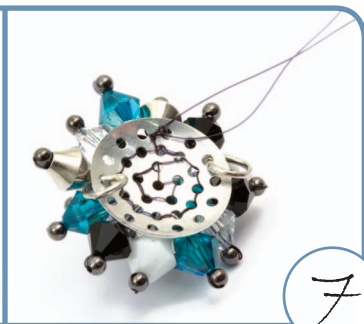
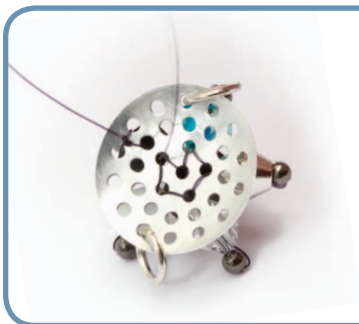


5- Turn back the dome face up and have the thread come out of the middle hole. String on a bicone bead followed by a small round bead.

Insert the thread counter-clockwise in the bicone bead and then in the middle hole.



6- Slightly pull on the thread to straighten up the bead.



7- Insert the thread in the next hole and repeat steps 5 and 6. Continue the stitching following a circling pattern. That way, you will not forget any holes and your stitching will be neat and even.

For a small dome, continue your stitching until you reach the next to last row. This will give it a more fashionable look. You can still continue stitching all holes up to the end of the dome to obtain a more extravagant look.



8- To complete your stitching, bring back the thread at the starting point, which is the first knot. Make a double flat knot with both threads. To strengthen your work, add a drop of glue on the knot.

In order to simplify the integration of your stitching to a necklace or bracelet, add larger jump rings to the rings already in place.

To integrate the stitching to a dome ring, you just need to fold back the small fasteners on the dome with pliers.

